

1110 ENGINEER COMBAT GROUP

Sgt. F. Zimmer



**THE
HODGES BRIDGE**

ACROSS THE RHINE RIVER

THE HODGES BRIDGE

CONSTRUCTED BY
1110 ENGINEER COMBAT GROUP
FIRST U.S. ARMY

148 ENGR C BN

6 APRIL 1945

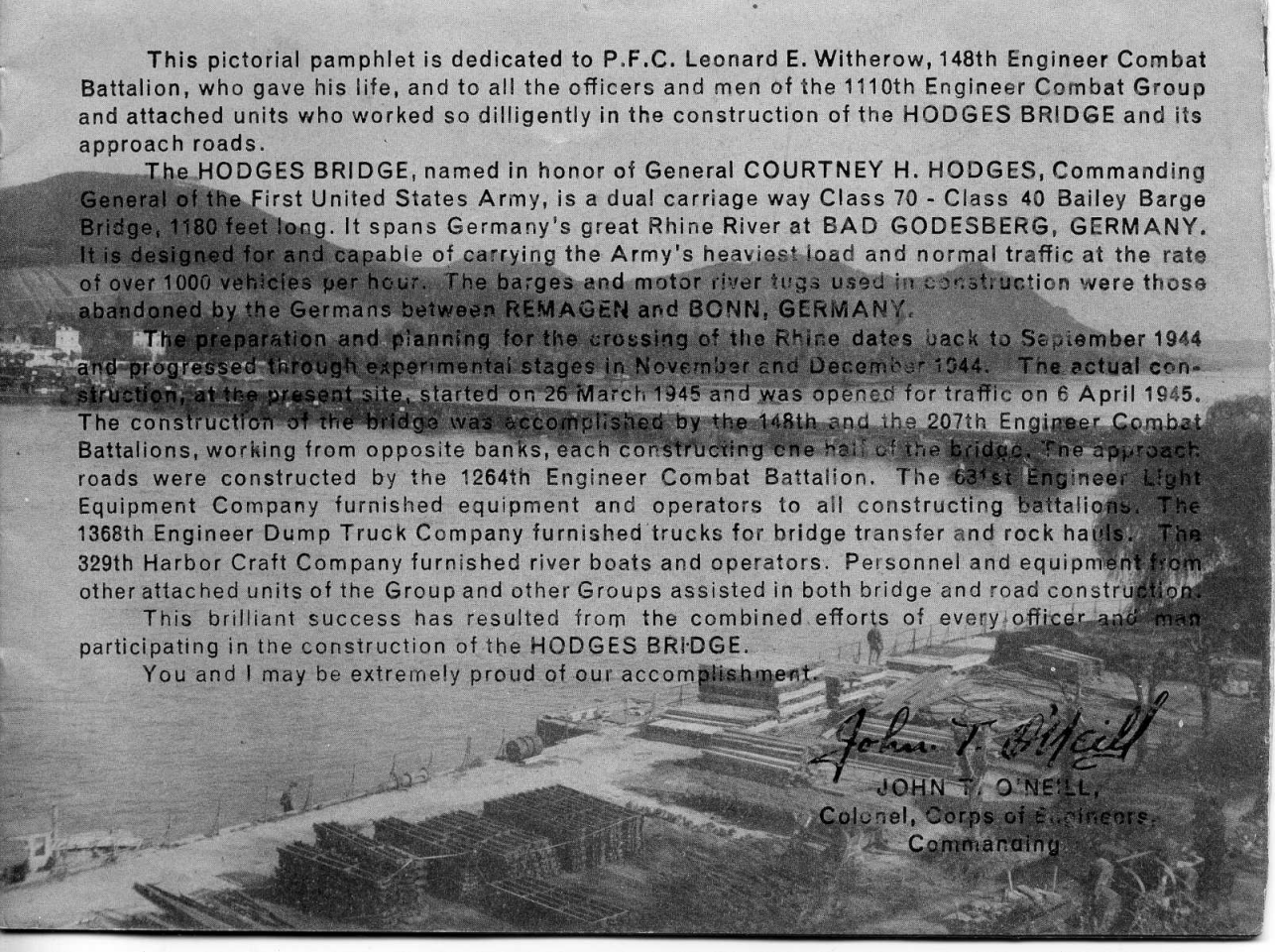
207 ENGR C BN

1264 ENGR C BN

1368 DUMP TRK CO

631 LIGHT EQUIP CO

1329 HARBOR CFT CO



This pictorial pamphlet is dedicated to P.F.C. Leonard E. Witherow, 148th Engineer Combat Battalion, who gave his life, and to all the officers and men of the 1110th Engineer Combat Group and attached units who worked so dilligently in the construction of the HODGES BRIDGE and its approach roads.

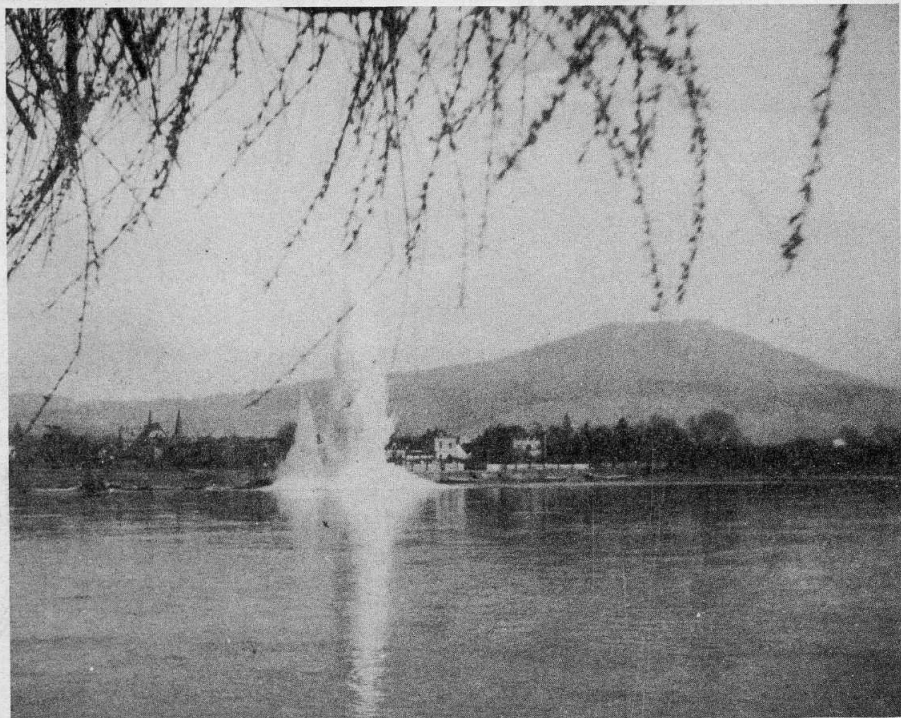
The HODGES BRIDGE, named in honor of General COURTNEY H. HODGES, Commanding General of the First United States Army, is a dual carriage way Class 70 - Class 40 Bailey Barge Bridge, 1180 feet long. It spans Germany's great Rhine River at BAD GODESBERG, GERMANY. It is designed for and capable of carrying the Army's heaviest load and normal traffic at the rate of over 1000 vehicles per hour. The barges and motor river tugs used in construction were those abandoned by the Germans between REMAGEN and BONN, GERMANY.

The preparation and planning for the crossing of the Rhine dates back to September 1944 and progressed through experimental stages in November and December 1944. The actual construction, at the present site, started on 26 March 1945 and was opened for traffic on 6 April 1945. The construction of the bridge was accomplished by the 148th and the 207th Engineer Combat Battalions, working from opposite banks, each constructing one half of the bridge. The approach roads were constructed by the 1264th Engineer Combat Battalion. The 631st Engineer Light Equipment Company furnished equipment and operators to all constructing battalions. The 1368th Engineer Dump Truck Company furnished trucks for bridge transfer and rock hauls. The 329th Harbor Craft Company furnished river boats and operators. Personnel and equipment from other attached units of the Group and other Groups assisted in both bridge and road construction.

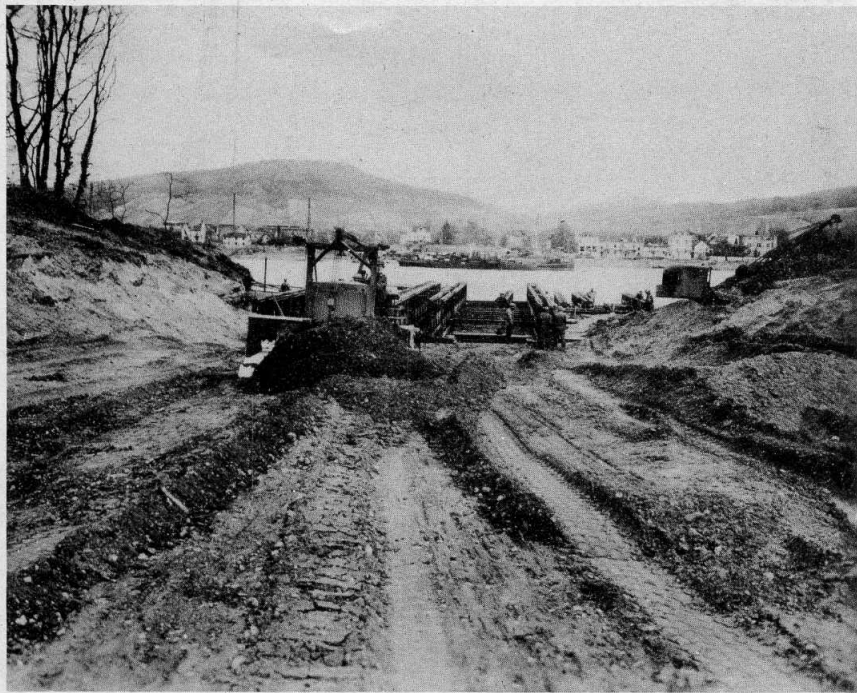
This brilliant success has resulted from the combined efforts of every officer and man participating in the construction of the HODGES BRIDGE.

You and I may be extremely proud of our accomplishment.

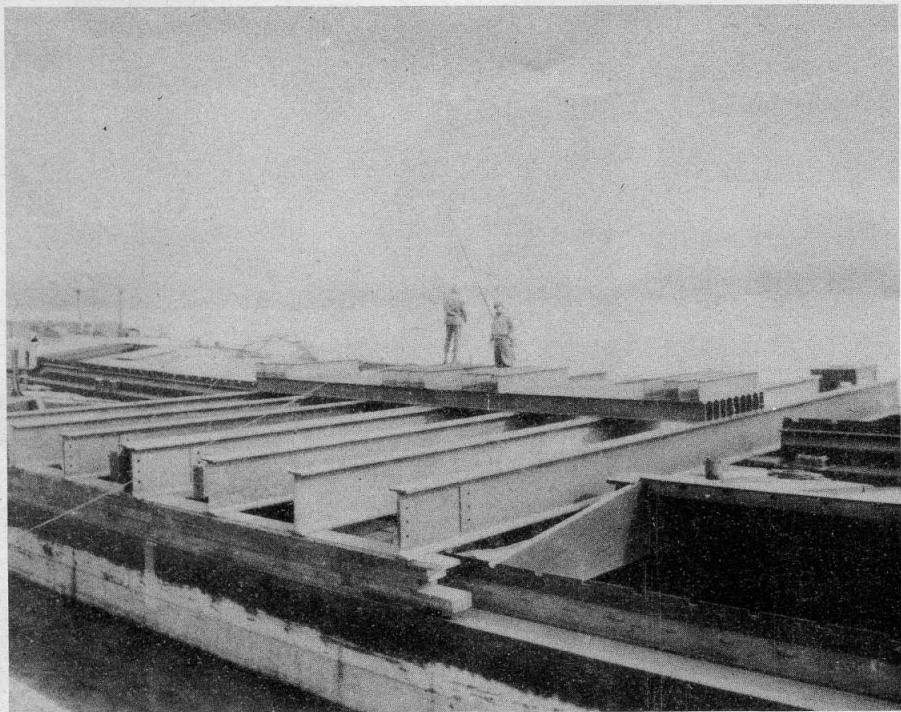
John T. O'Neill
JOHN T. O'NEILL,
Colonel, Corps of Engineers,
Commanding



DEMOLISHING SUNKEN BARGE ALONG EAST SHORE



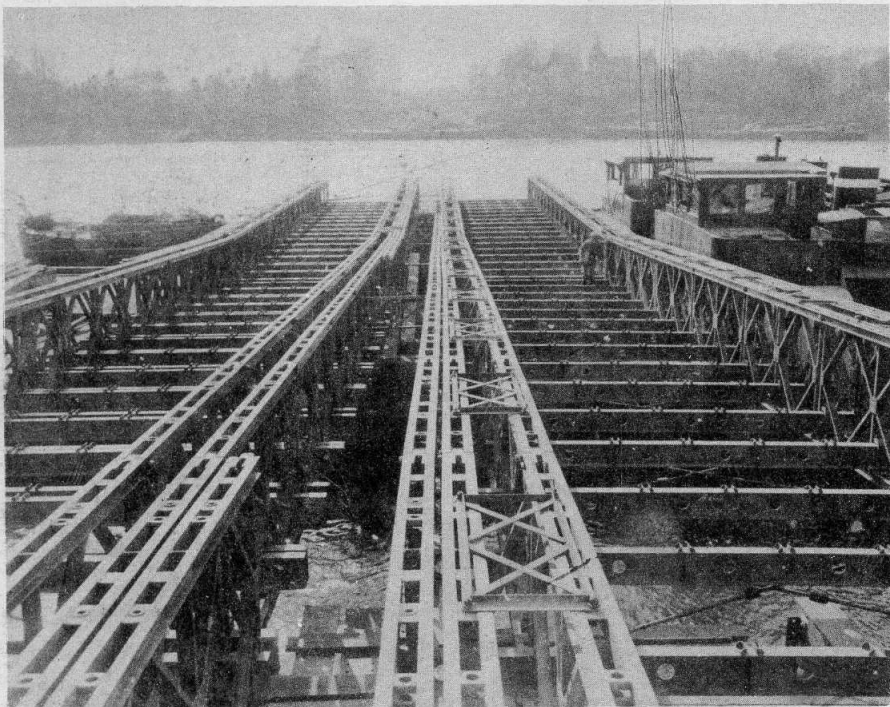
WEST BANK SHOWING CONSTRUCTION OF APPROACH



BARGE PIER WITH I-BEAMS IN PLACE



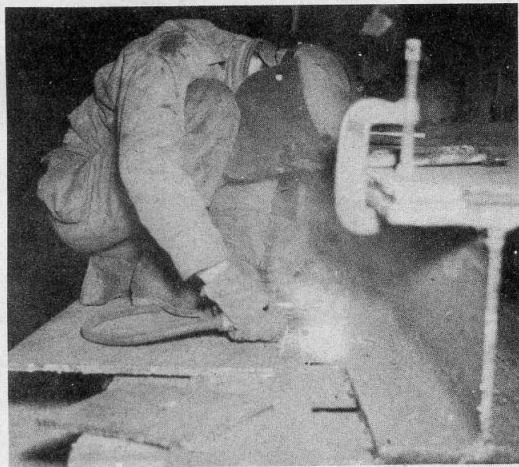
PLACING PANELS



EAST LANDING BAY BEFORE DECKING

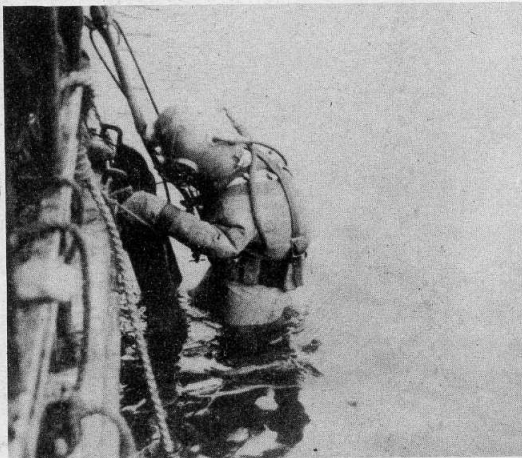


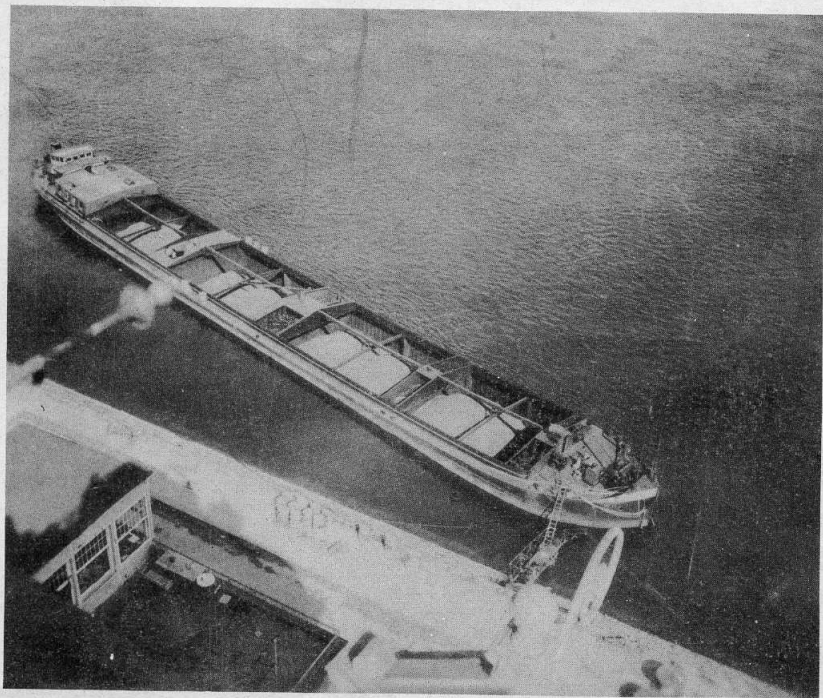
PLACING THE SECOND STORY ON THE CLASS 70 CARRIAGEWAY



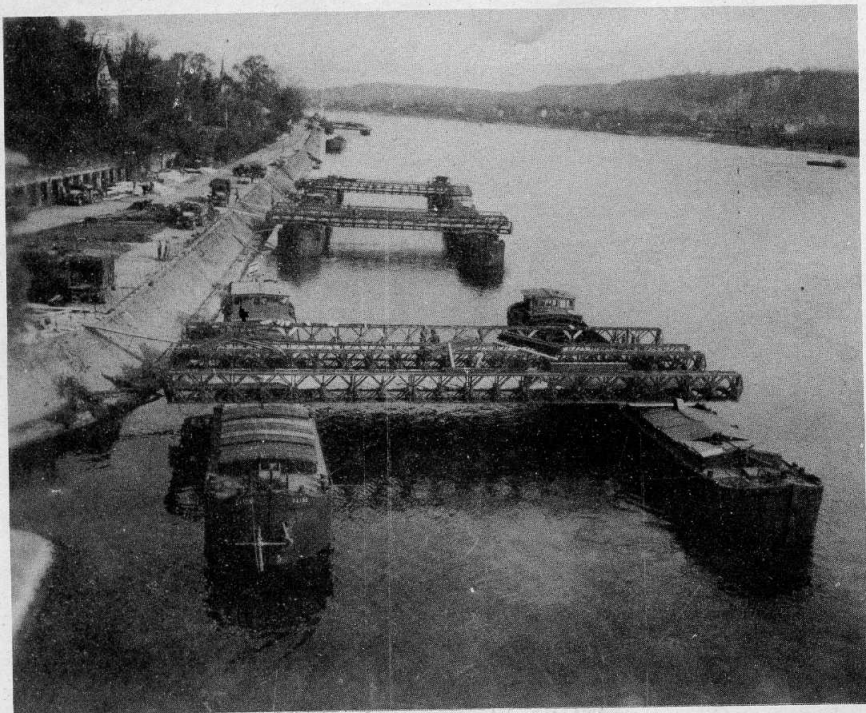
WELDING THE I-BEAMS

DIVER DESCENDING TO SET DEMOLITION
CHARGES TO CLEAR SUNKEN BARGES

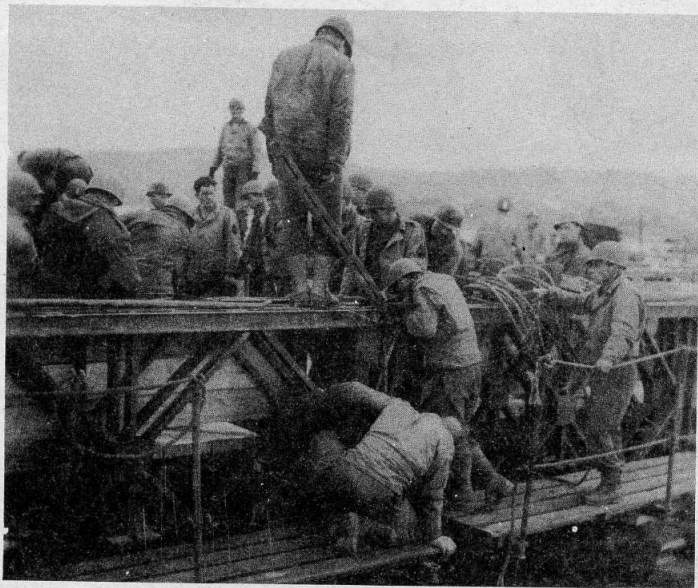




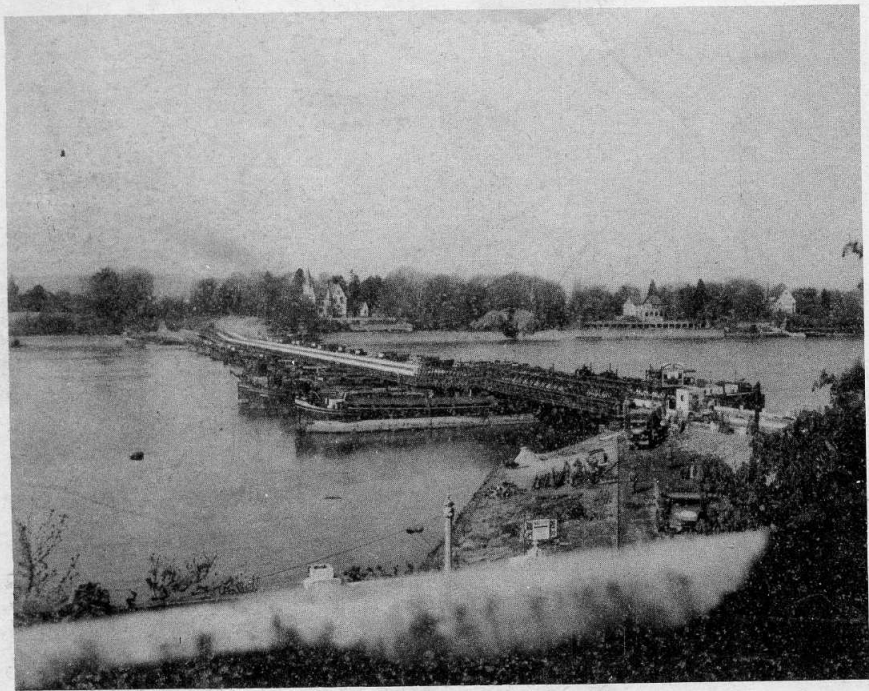
ANCHOR BARGE WITH BALLAST BEFORE PLACING



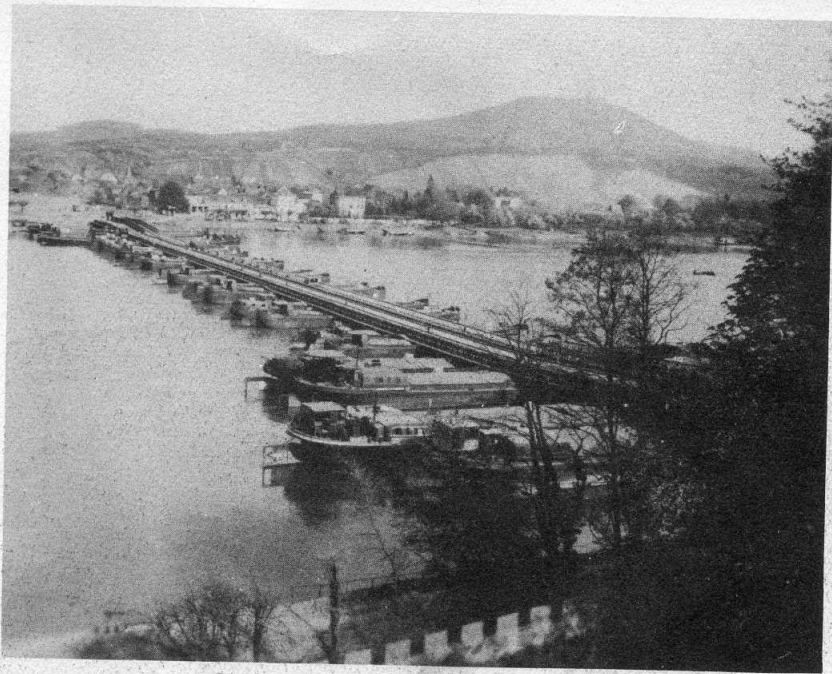
BARGES WITH BAILEY SECTIONS BEFORE BEING ASSEMBLED



WORKING IN THE LAST PIN



BRIDGE GOING WEST



BRIDGE GOING EAST

RE D 36
FIRST U. S. ARMY, 1945.